

CT08-1200 Current Sense Xfmr



Features

- Rated up to 50A
- PCB Mount
- High Current Density
- 47Hz to 5.0kHz Freq. Range

Applications

- Switching Power Supplies
- Motor Controls

Packaging

- 66 Pcs./Tray
- 10 Trays/Box
- 660 Pcs./Box

Terminating Resistor Options

I_{Pri}	Terminating Resistor	E_o
10	80	0.667
20	40	0.667
50	16	0.667

$$E-T = (E_o * 1/f)/2 \text{ (Bi-Polar Only)}$$

$$E_o = I_p * (R_b/Tr)$$

E_o = Output V I_p = Pri. Current Tr = Turns Ratio
 f = frequency R_b = Term Res.

Electrical Specifications

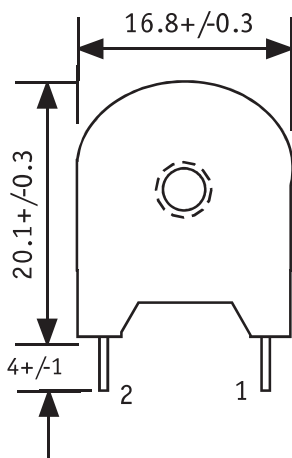
- Secondary Turns: 1,200
- Current Range: Up to 50A
- Hi-Pot: 3,750 Vac Pri:Sec (60Hz, 1mA, 1 min.)
- Operating Temp. Range: -40C to +130C
- Secondary Inductance (L_s): 10H min.
- Secondary DCR (R_s): 40 Ohms max.
- E-T Rating: 3,000V-uSec at 100C (Bi-Polar Only)
- Electrical specifications at 25C
- Frequency Range: 47Hz to 5.0kHz

Material Specifications

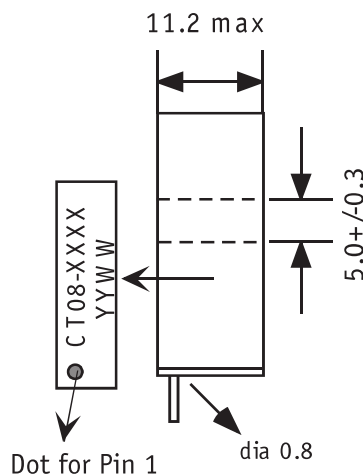
- Meets UL94V-0
- RoHS Compliant
- Material Rating: Meets requirements for UL Class B (130C) Insulation System. Ambient + Temp. Rise + Hot Spot Allowance \leq 130C



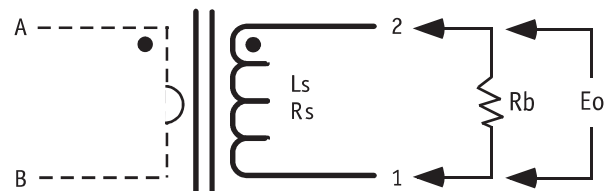
Front View



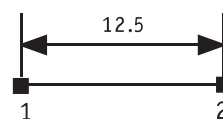
Side View



Schematic



Footprint



TOP VIEW

units: mm

Specifications subject to change without notice.

Mouser Electronics

Authorized Distributor

Click to View Pricing, Inventory, Delivery & Lifecycle Information:

[ICE Components:](#)

[CT08-1200](#)